



---

**Economic Activity Index (“GDB-EAI”)**  
*For the month of February 2013*

---

## General Commentary - February 2013

---

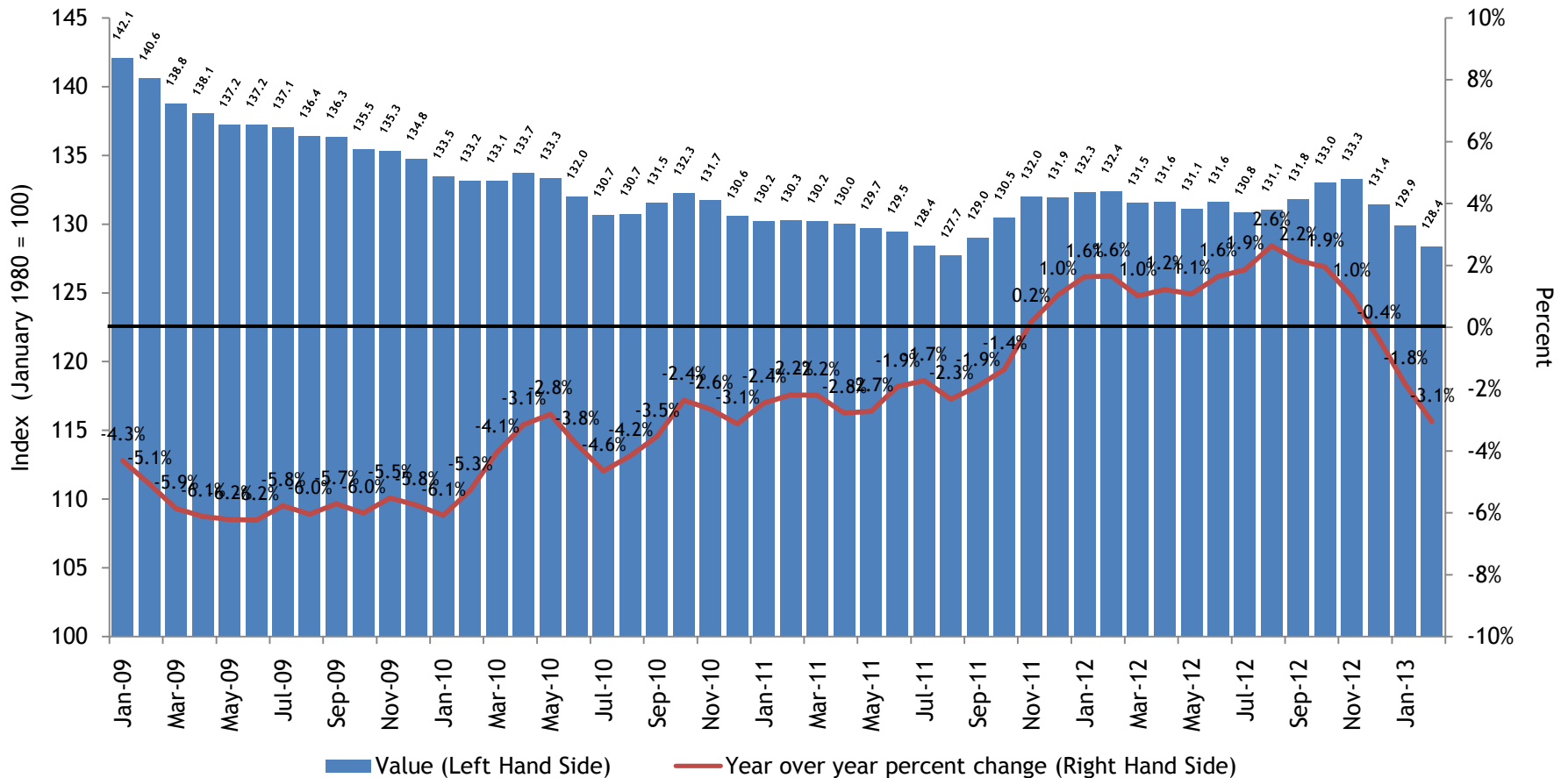
**GDB-EAI for the month of February registered a 3.1% year-over-year (“YOY”) reduction**

- February 2013 EAI was 128.4, a 3.1% reduction compared to February 2012. Nevertheless, the cumulative value for FY2013 (July-February) is still increasing by 0.5% with respect to the corresponding cumulative figure for FY2012.
- Gasoline consumption\* was 84.7 million gallons. The average cumulative value for FY2013 was 88.0 million, 1.9% above the respective cumulative amount for FY2012.
- Total non-farm payroll employment for February 2013 totaled 913,100, an annual reduction of 1.5%. Nevertheless, the cumulative number for FY2013 is still up by 0.4%.
- Electric power generation totaled 1,562.6 million kWh, an annual decrease of 4.6%. The cumulative quantity for FY2013 was still higher by 0.2% with respect the cumulative for FY2012.
- Cement sales totaled 1.459 million bags, registering an annual reduction of 20.4%. Cumulative cement sales were below 6.7% with respect to the cumulative amount for FY2012.

\* Estimated monthly gasoline consumption is derived from the Treasury Department’s monthly gasoline excise tax collections and the Highways and Transportation Authority reports. The irregularity in the monthly collections comes from the inventory and purchases fluctuations from major gasoline importers. As a result, the estimate used by GDB does not necessarily reflect actual monthly consumption by individuals.

# The GDB-EAI for the month of February 2013 reflected a year-over-year reduction of 3.1%

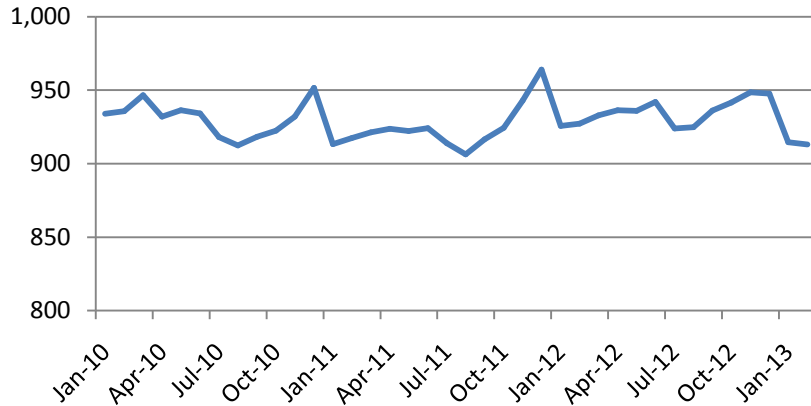
## GDB Economic Activity Index



# GDB Economic Activity Index Components

## Total Non-Farm Payroll Employment\*

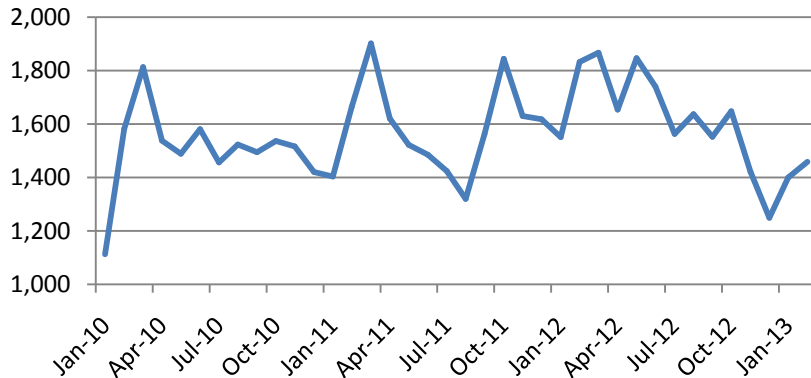
(Thousands of jobs)



- Total non-farm payroll employment for February 2013 totaled 913,100, an annual reduction of 1.5%.
- Nevertheless, the cumulative number is still up by 0.4%.

## Cement Sales

(Cement Bags sold, in thousands)



- Cement sales totaled 1.459 million bags, registering an annual reduction of 20.4%.
- Cumulative cement sales for FY2013 were 6.7% below the cumulative figure for FY2012.

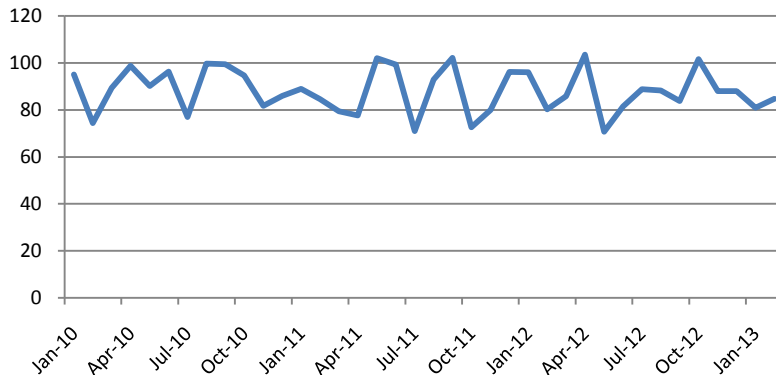
Sources: BLS and GDB

\* Not seasonally adjusted.

# GDB Economic Activity Index Components

## Gasoline Consumption

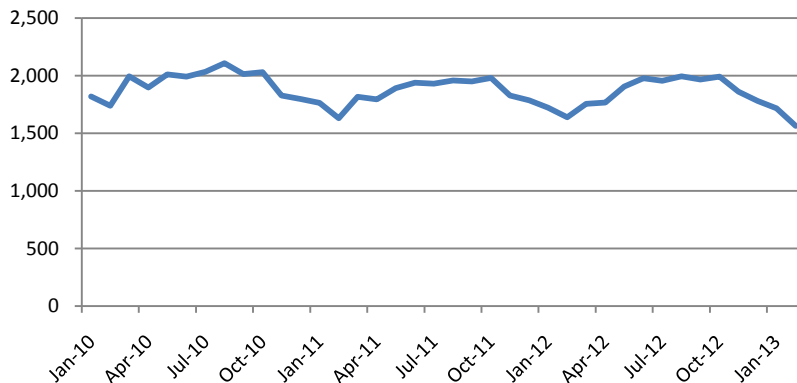
(Millions of gallons)



- Gasoline consumption\* was 84.7 million gallons.
- The average cumulative value for FY2013 was 88.0 million, 1.9% above the respective cumulative amount for FY2012.
- Estimated monthly gasoline consumption is derived from the Treasury Department's monthly gasoline excise tax collections and the Highways and Transportation Authority reports.

## Electric Power Generation

(Millions of kWh)



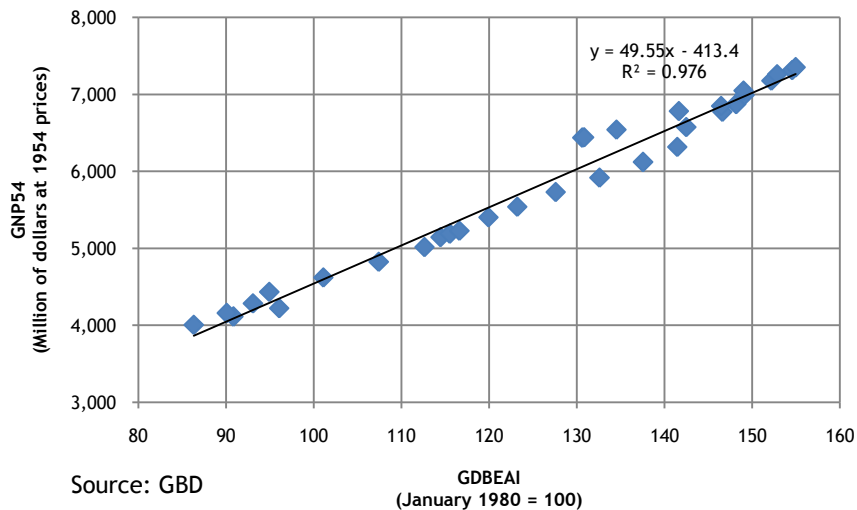
- Electric power generation totaled 1,562.6 million kWh, an annual decrease of 4.6%.
- The cumulative quantity was still higher by 0.2% with respect to the cumulative amount for FY2012.

# Description of the GDB-Economic Activity Index

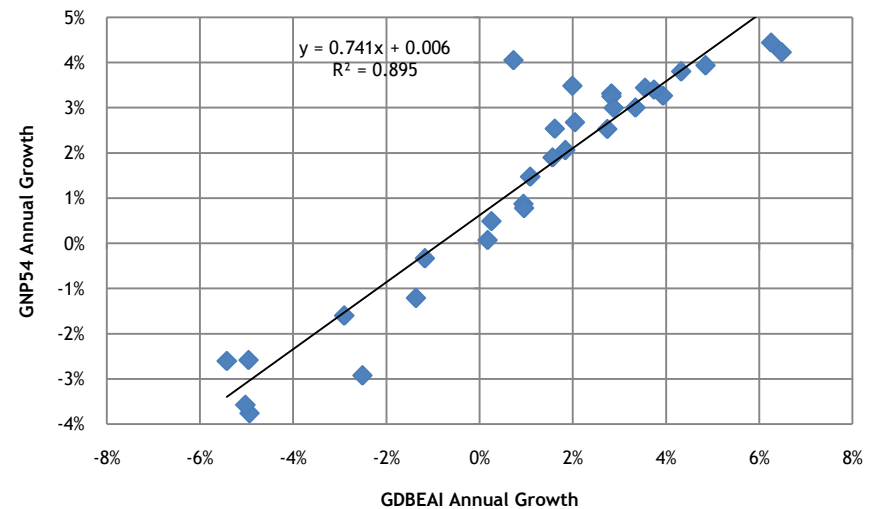
# Description of the GDB-EAI

- The GDB-EAI is a coincident index for the economic activity of Puerto Rico. It is highly correlated to the Puerto Rico's real GNP not only on the levels, but also on the annual growth rates.
- This index was developed following the methodology similar to that used by *The Conference Board* in their coincident index. This methodology follows a standard procedure to adjust the data for seasonality and volatility factors.

Real Gross National Product as a function of the  
GDB Economic Activity Index  
(Relationship on the levels)



Real Gross National Product as a function of the  
GDB Economic Activity Index  
(Relationship on the growth rates)



### GDB Economic Activity Index Highlights

#### Advantages of the GDB-EAI:

- Readily available
- Highly correlated to Puerto Rico's real GNP
- Reliable tool to monitor actual trend of Puerto Rico economy

#### The GDB-EAI is made up of 4 indicators:

- Total Payroll Employment (Establishment Survey/ Thousand of employees)
- Total Electric Power Generation (Millions of KWH)
- Cement Sales (Millions of bags)
- Gas Consumption (Millions of gallons)



## Disclaimer

---

The GDB-EAI and its indicators are subject to revisions. While the information comprising the GDB EAI has been obtained from sources GDB believes to be reliable, GDB is not responsible for any errors or omissions, or for the results obtained from the use of this information.